

Model ACC-30

PHASETEC™ digital power conditioners are designed to safely operate electrical equipment in the harshest power quality environments. With a wide input voltage range, user selected output voltages and frequency conversion capabilities, PHASETEC™ can operate anywhere in the world.

PHASETEC™ digital power conditioners provide the ultimate power quality to protect the most sensitive electrical equipment. Employing double IGBT conversion, PHASETEC™ isolates your equipment from all but total power outage, covering 94% of adverse power events. Why pay for a UPS system if your needs are primarily power conditioning? PHASETEC™ can provide unsurpassed power conditioning at a fraction of the cost.



FEATURES & BENEFITS

- Accepts a wide range of input voltage while maintaining tight voltage regulation
- Four user selected output voltages to operate a wide range of equipment
- 50 or 60 Hz input frequency and user selected output of 50 or 60 Hz allows operation anywhere in the world
- Double IGBT conversion isolates even the most sensitive equipment from dips, sags, surges, transients and harmonics
- Electronic power factor correction protects upstream equipment from harmonic distortion
- High momentary overload capacity for demanding applications
- Optional isolation transformer for dual voltage output and protection from common mode noise

SPECIFICATIONS

SELECTED OUTPUT VOLTAGE	OUTPUT CURRENT, STEADY STATE	RATED OUTPUT** (AT 220V INPUT)
208 V AC	30 A	6.2 KVA
220/110 V AC	30 A*	6.6 KVA
230/115 V AC	30 A*	6.9 KVA
240/120 V AC	30 A*	7.2 KVA

*With optional isolation transformer, lower voltage current is double

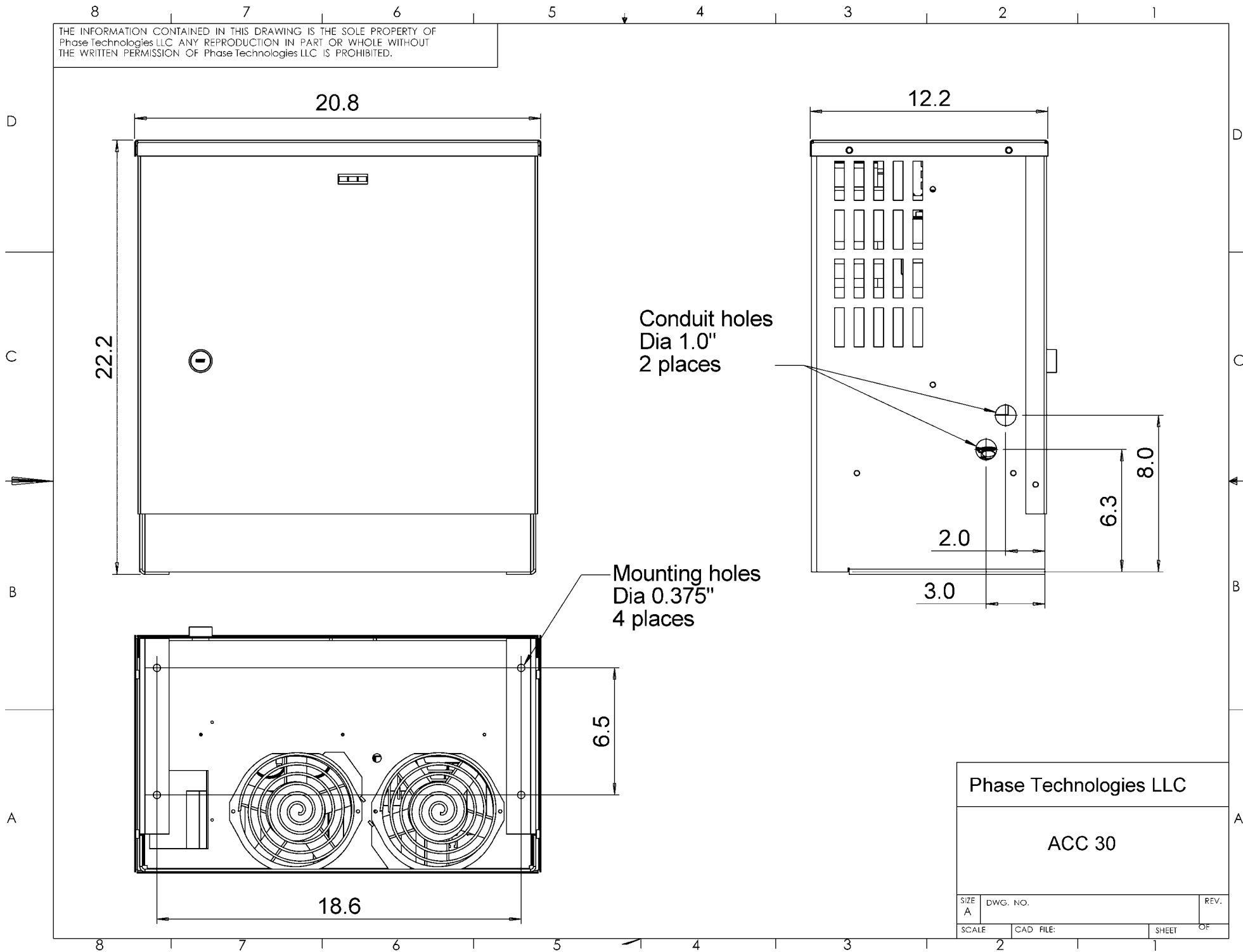
**De-rate linearly as input voltage decreases

INPUT POWER	
Input frequency	50 or 60 Hz
Power factor	Near unity
Input voltage	170 – 277 V AC

OUTPUT POWER	
Output power characteristics	Sinusoidal, <3% total harmonic distortion
Voltage regulation	+/- 2% for entire input voltage range
Output voltage	User selected 208 V, 220 V, 230 V, 240 V
Output frequency	User selected 50 Hz or 60 Hz, +/- 0.05%
Rated current, steady state	30 A

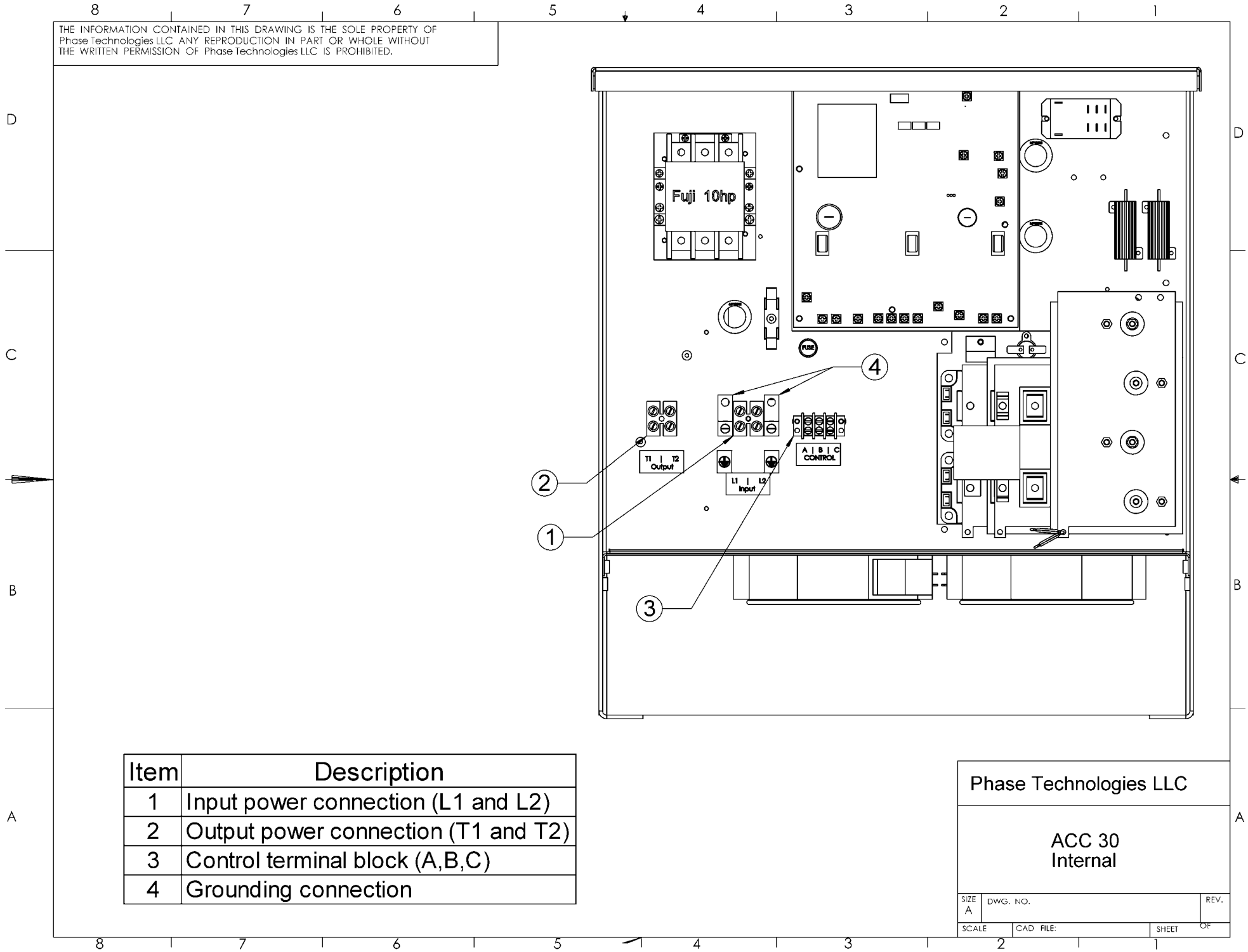
GENERAL	
Efficiency	95% typical
Ambient temperature range	-10 – 40 C
Storage temperature	-20 – 60 C
Weight	123 lb. (56 KG)
Enclosure	Powder coated steel, indoor Type 1
Dimensions H x W x D	22 x 21 x 12 in. (56 x 53 x 30 cm)
Connections	Hard wired, terminal blocks

THE INFORMATION CONTAINED IN THIS DRAWING IS THE SOLE PROPERTY OF Phase Technologies LLC. ANY REPRODUCTION IN PART OR WHOLE WITHOUT THE WRITTEN PERMISSION OF Phase Technologies LLC IS PROHIBITED.



Phase Technologies LLC		
ACC 30		
SIZE A	DWG. NO.	REV.
SCALE	CAD FILE:	SHEET OF

THE INFORMATION CONTAINED IN THIS DRAWING IS THE SOLE PROPERTY OF Phase Technologies LLC. ANY REPRODUCTION IN PART OR WHOLE WITHOUT THE WRITTEN PERMISSION OF Phase Technologies LLC IS PROHIBITED.



Item	Description
1	Input power connection (L1 and L2)
2	Output power connection (T1 and T2)
3	Control terminal block (A,B,C)
4	Grounding connection

Phase Technologies LLC		
ACC 30 Internal		
SIZE A	DWG. NO.	REV.
SCALE	CAD FILE:	SHEET OF